

WEATHER



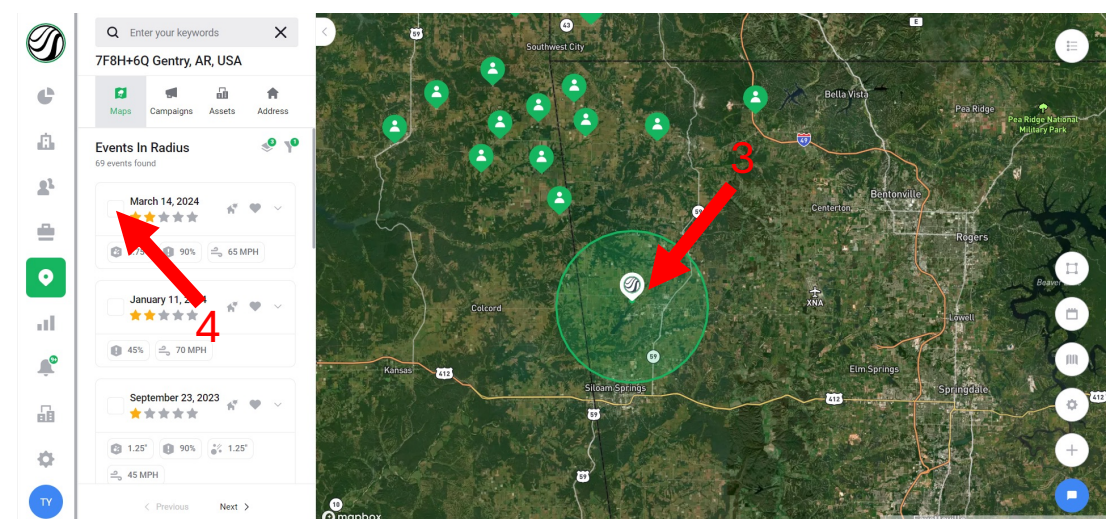
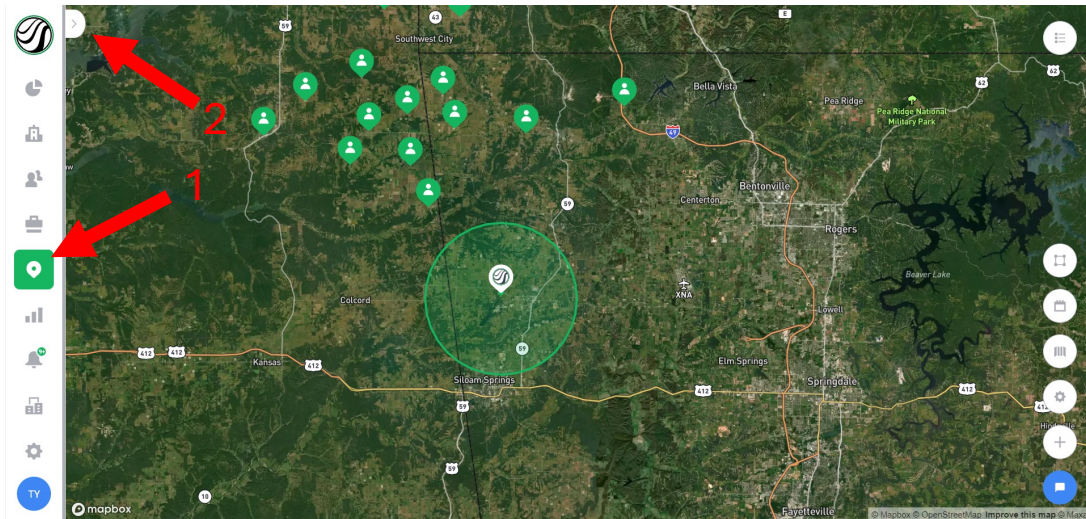
— RESTORATION GROUP —



Finding Storm Swaths and how to display them

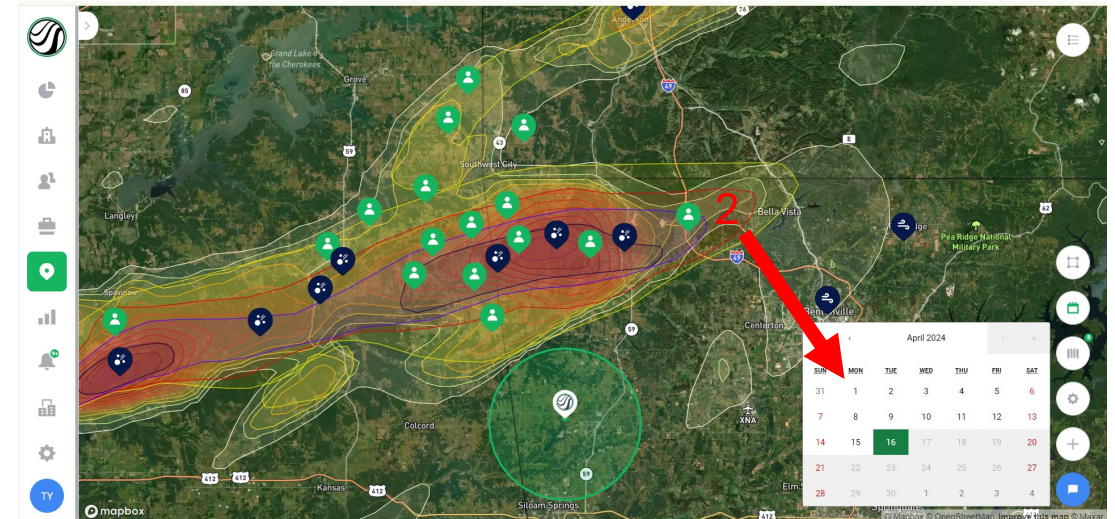
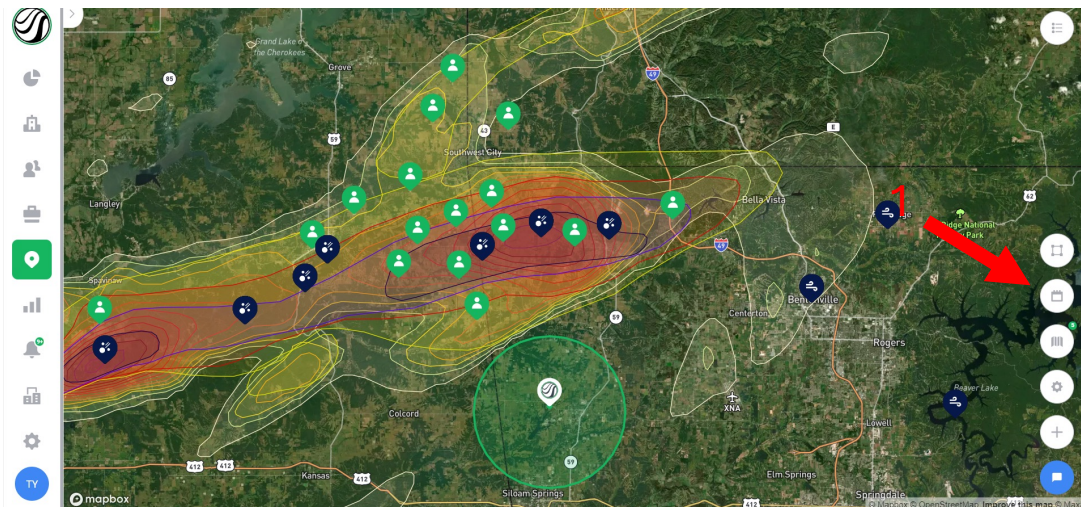
First way

1. Click the map icon to open the map
2. Click the arrow in top left to open map menu
3. Click on the map to drop a pin
4. Select the storm dates to turn on



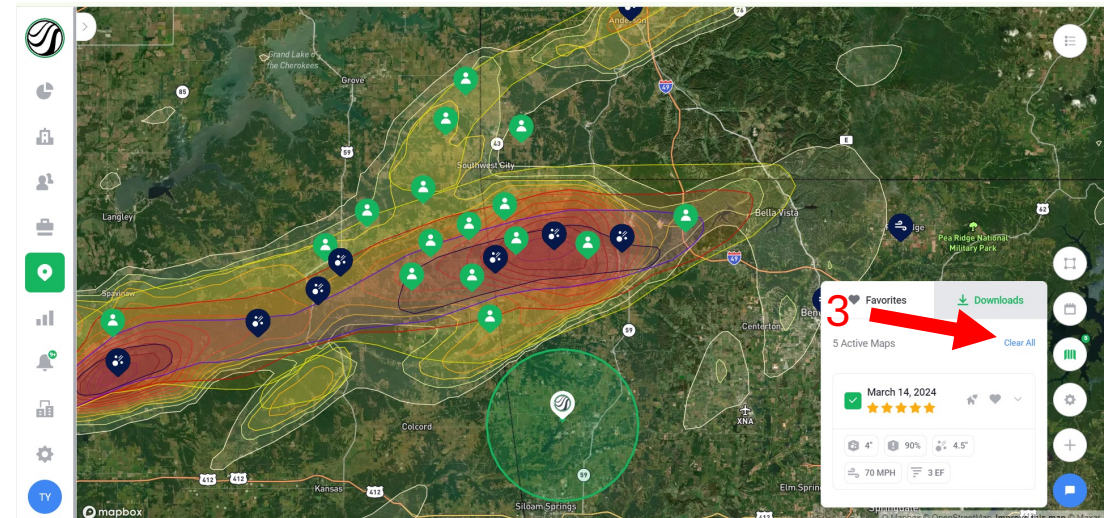
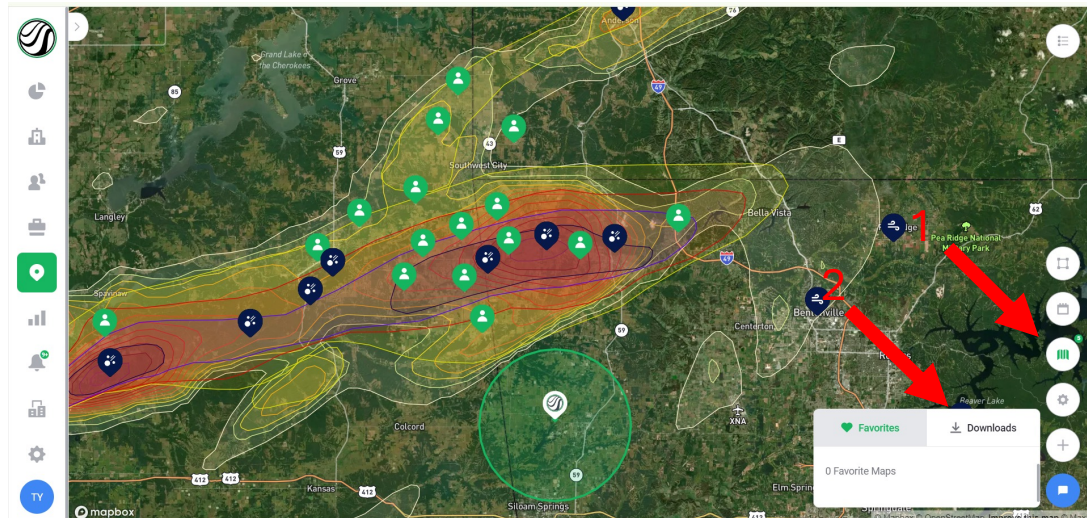
Second way

1. Click the calendar on the right side of the map
 2. Select the dates you want displayed on the map.
- You can only have 10 swaths open at one time so make sure to clear old swaths.**



Clearing unneeded storm swaths

1. Click the shutter icon on the right side of the screen
2. Click downloads
3. Click clear all or clear unwanted dates.





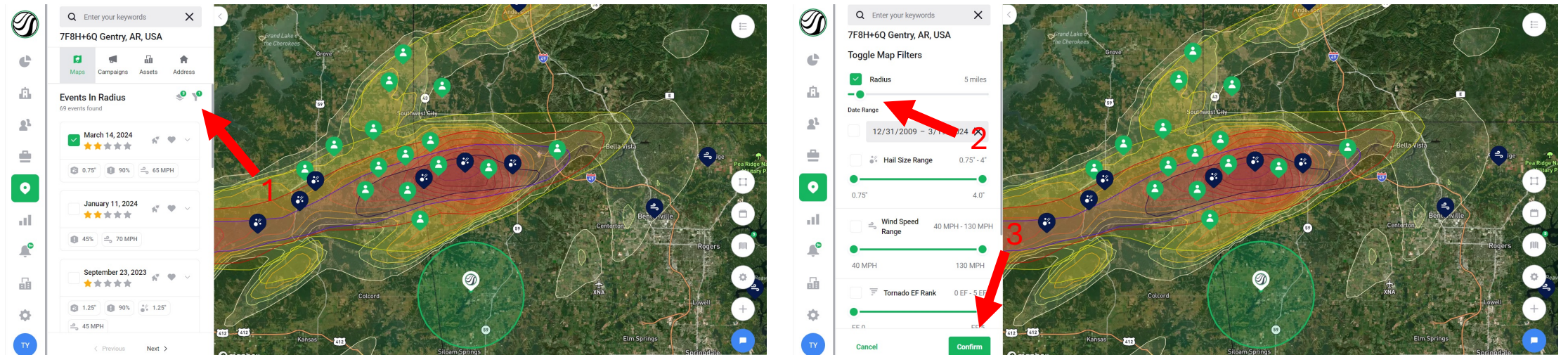
Adjusting filters and swath opacity

To open filter options

1. Click the funnel in the map menu

2. Adjust storm distance from pin, type of storm, and storm size.

3. Make sure to check the box next to the data you want to see and click confirm



To adjust swath opacity

1. Click the layers button in the map menu
2. Check the box for types of swaths
3. Adjust opacity slider to liking
4. Click confirm

